

Big Stone Therapy celebrating 25 years

By Caitlyn Mahlum
Staff Writer

Nestled in the Clarkfield Care Center, Big Stone Therapy Inc. has been laying down the foundation of therapy based care for Clarkfield. Big Stone is a third party therapy company that is currently partnered to celebrate therapy services to the Care Center and the community.

Big Stone has been involved with the Clarkfield Care Center since October 2014. After expanding to the Minneota area approximately five years ago, Big Stone set its sites on Clarkfield for growth. The nearly two and a half year old partnership between Clarkfield and Big Stone has been providing patients with services such as speech therapy, memory rehabilitation, occupational therapy, and physical therapy.

The company has been finding its niche in Clarkfield as it has been providing services in three primary different ways to the community. Big Stone provides serv-



Big Stone Therapy has been servicing the area for 25 years and is a recent addition to the Clarkfield Care Center. Above, are staff from Big Stone. Front (L-to-R): Sara Myhre, PTA; Amy McLain, COTA; Christa Weber, OTR. Back row: Abbey Richter, SLP; Pam Hennen, Secretary; Wayne Hennen, PT; Lisa Hennen, PT.

ices in house for residents of the Care Center and also for those who visit the Care Center for therapy sessions.

Notably, the company is celebrating its 25th founding anniversary. According to their official website, rocksolidrehab.com, the therapy based company was established in July,

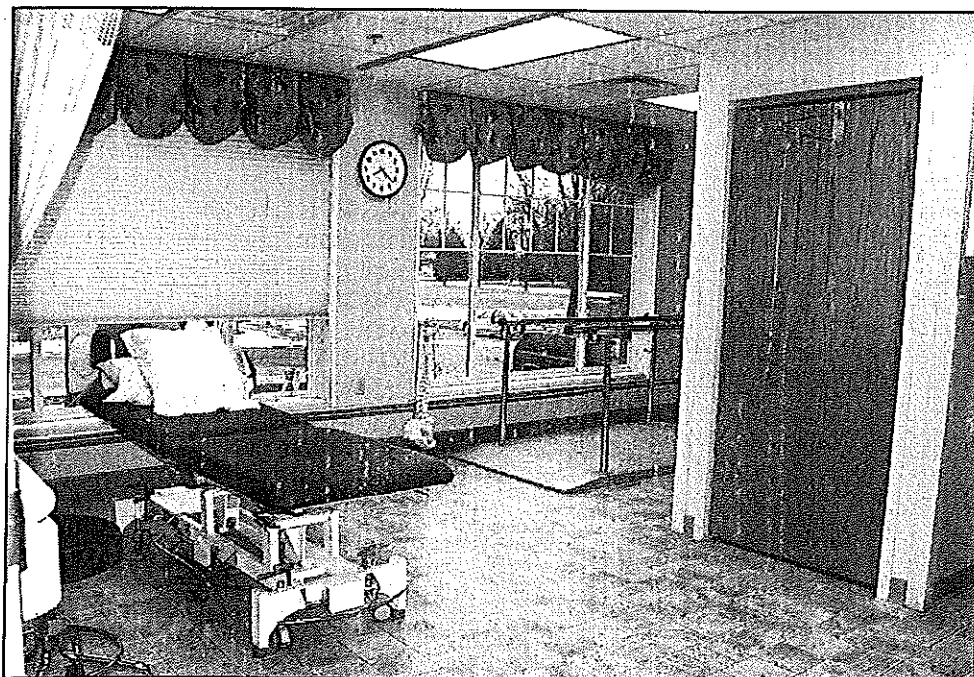
1990 by Physical Therapists Paul Treinin and Wade VanDover. Originally, the three Minnesotan communities of Big Stone serviced Ortonville, Wheaton, and Graceville and a single South Dakota City named Sisseton. After over two decades of expansion off of its foundation, Big

Stone now provides therapy services for 21 different communities in both Minnesota and South Dakota. The company employs approximately 230 employees in their service area.

On the monetary side of things, Big Stone Therapy's presence in the building is a financially positive asset to the Care Center. "It's a way for the Care Center, whether it's the Minneota or Clarkfield, to generate some revenue with physical therapy."

The partnership between the Care Center and Big Stone therapy has been positive, according to Wayne Hennen, the Clinic Manager for both the Minneota and Clarkfield sites.

He explained, "We're happy to work with the Clarkfield Care Center, there's a great group of people there. We want to work with them to grow and see more patients while providing more services for Clarkfield."



The therapy room in the Care Center is equipped for a variety of needs.